



## BUTIREX C4 improves performance in piglets

DENMARK, 2013  
PREM13-POR-LETS-3

The inclusion of sodium butyrate in piglet diets has shown for several years effectively stimulating feed intake, reducing the intestinal disorders and improving the performance parameters. It has a positive impact increasing the length of intestinal villi, which expected to improve the nutrient absorption in the feed.



### Method and Material

Trial carried out in the **Pig Research Centre's Grønhøj of Denmark** (2013). Experimental design comprised two groups (Control and Butirex C4) with 36 pens and 10 piglets per pen. The pigs' weight averaged was 7.3 kg at the start and 31 kg at the end of the trial.

The diets (prestarter and starter) used in Control and Test group were the same, except for the 0.3 % Butirex C4 addition.

Data collection was carried out at the pen level, recording the initial, intermediate and final weights to determine the average daily gain, feed consumption in each phase, and the needs for drug treatments, mortality, incidence of diarrhoea and transfer of piglets. to the quarantine pens.

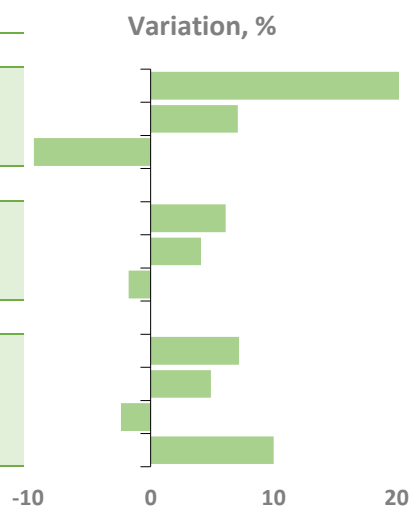
The productive value of the animals was determined based on the data of weight gain, feed cost and number of productive days, using the average prices of the last five years (2007 - 2012) in the Danish market. The productive value per square / day was analysed as the main parameter with the initial weight as a covariate. The model included the room and the group as variables. In addition, the normal distribution and the presence of extremes were analysed, not being necessary to rule out any pen from the data group. Mortality and drug treatments were analysed as secondary parameters using a logical regression.

## Results

The production values were significantly ( $P < 0.0001$ ) affected by the addition of Butirex C4. The pigs fed the diet containing Butirex C4 had an increase for feed intake ( $P < 0.01$ ); a better daily gain ( $P < 0.001$ ); and an improvement of feed conversion rate ( $P < 0.01$ ) than Control group for all measured periods.

Parameter	Control	Butirex C4	P
<b>1° Phase 7-9 kg</b>			
DWG, g	<b>190 b</b>	<b>230 a</b>	0.0003
DFI, Kg	0.28	0.30	0.006
FCR	<b>1.48 y</b>	<b>1.34 x</b>	0.005
<b>2° Phase 9-30 kg</b>			
DWG, g	<b>572 b</b>	<b>607 a</b>	0.0007
DFI, Kg	0.97	1.01	0.008
FCR	1.70	1.67	0.006
<b>Global period 7-30 kg</b>			
DWG, g	<b>484 b</b>	<b>519 a</b>	0.0002
DFI, Kg	<b>0.81 y</b>	<b>0.85 x</b>	0.0042
FCR	<b>1.68 b</b>	<b>1.64 a</b>	0.0007
Productive Index	<b>100 b</b>	<b>110 a</b>	$< 0.0001$

a,b :  $P \leq 0.001$ ; x,y :  $P \leq 0.005$



The addition of Butirex C4 to piglet's diet stimulates the feed intake and intestinal health improving feed digestibility. This effect gives as result a better Productive Index for an increase in weight gain and a decrease in the feed conversion rate.



Do you want to know more?



butirexC4.net